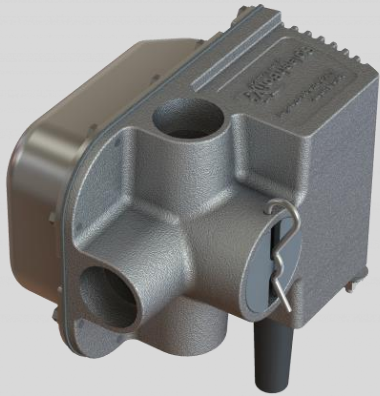


# SplashBotix SplashValve

A diverter valve for the world's most advanced water features



## A True Game Changer

The SplashValve is a fast-acting diverter valve that dramatically improves flow control within fountain shows and aquatic features by enabling designers to run multiple effects off a single supply manifold.

SplashValves have a near-zero back pressure over full operating range, and make excellent, higher-performing replacements for independent pumps and switches.

Capable of alternating on and off in less than a quarter of a second, the SplashValve is hyper responsive, designed to enable highly advanced, cutting edge water features and effects.

Its low-voltage, low-power operating requirement, seal-less clog-proof design and high-quality 316 stainless steel construction makes the SplashValve highly reliable and long-lasting.

With the help of SplashBotix's expert team, the SplashValve can be easily integrated into a range of project types, from existing legacy installations to brand new greenfield designs.

### Benefits

- Intrinsically safe, low-voltage, low-power operation
- High quality 100% 316 stainless steel construction
- Reliable, seal-less and clog-proof design

### Specifications

Dimensions	165 mm x 125 mm x 128 mm 6.5" L x 4.9" W x 5" H
Weight	5.25 kg / 13.5 lbs 316 Stainless Steel, Delrin, & UHMW
Power	2.8 AMPS 34 to 36 W 12 VAC OR 24 VDC
Max PSI	50
Max GPM	60
Cycle Time	.23 seconds from 0 – full effect
Communication	DMX/RDM [with extended RDM functionality]

### Cable Options and Compatible SplashValve Part Numbers

1 M OASE CABLES – Two cable system	SplashValve Part Number: 072089W003 1 M submersible power cable w/connector & 1 M submersible DMX cable w/connector
3 M HOMERUN ONLY – Single cable system	SplashValve Part Number: 072089W004 3 M single hybrid submersible power & DMX cable w/pigtail, 5-core cable
3 M MULTI-DROP DMX – Up to 30 devices on a single run	SplashValve Part Number: 072089W005 3 M single hybrid submersible power & DMX cable w/pigtail, 7-core cable



**SplashValve**  
Diverter Valve